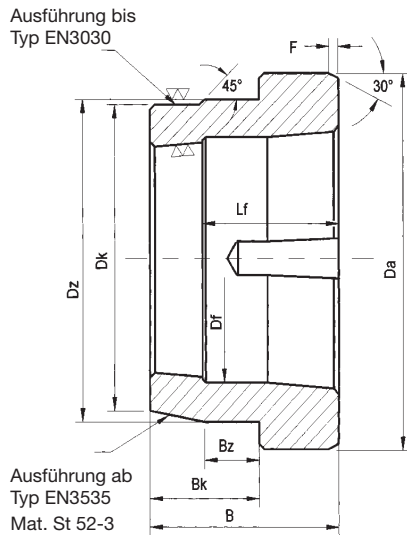


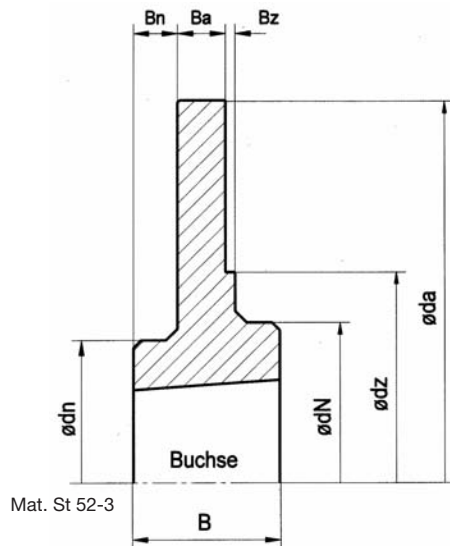
Einschweißnaben WM • Weld-on-hubs



Type	Buchse bush	$\varnothing D_A$ [mm]	$\varnothing D_z$ [mm]	$\varnothing D_k$ [mm]	B [mm]	B_k [mm]	B_z [mm]	$\varnothing D_f$ [mm]	L_f [mm]	F [mm]	s [mm]	d_{max} [mm]	Gewicht weight [kg]
EN 1108		58	50	48	23	15	9	-	-	2	2	25	0,10
EN 1210		73	60	58	26	16,5	10	-	-	4	4	30	0,20
EN 1215		73	60	58	38	22,0	16	-	-	4	4	30	0,50
EN 1610		83	70	68	26	16,5	10	-	-	4	4	40	0,55
EN 1615		83	70	68	38	22,0	11	56,0	25	4	4	40	0,60
EN 2012		96	90	88	32	22,0	12	-	-	4	5	50	0,70
EN 2517		127	110	108	45	26,0	13	84,0	31	5	5	60	1,80
EN 3020		152	130	128	51	27,0	18	106,0	26	10	6	75	3,50
EN 3030		152	130	128	76	51,0	19	106,0	45	10	6	75	4,50
EN 3535		184	155	152	89	67,0	25	124,0	52	16	6	90	6,50
EN 4040		225	195	188	102	70,0	35	132,0	70	14	8	100	13,50
EN 4545		254	220	214	114	76,0	40	156,5	75	14	8	110	20,30
EN 5050		276	242	235	127	89,0	40	172,0	85	14	10	125	25,50
EN 6050		350	315	287	127	89,0	40	230,0	80	10	12	150	52,00

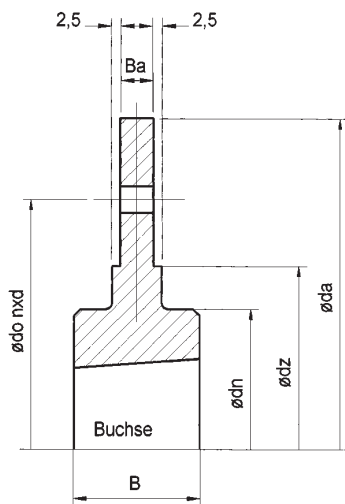
s: Schweißnaht • welded joint

Flanschnaben • Flange hubs



Type	Buchse bush	B	Bn	da	dn	dz	dN	Ba	Bz	Gewicht weight [kg]
FN 12 1210		25	4	180	60	90	73	9	3	2,0
FN 16 1615		38	9	200	70	110	83	10	3	2,5
FN 20 2517		44	11	270	110	140	127	11	3	6,0
FN 25 2517		44	10	340	110	170	127	12	3	9,2
FN 30-1 3030		76	32	430	130	220	152	15	4	20,0
FN 30-2 3030		76	31	485	130	250	152	15	5	25,0
FN 40 4040		102	45	630	190	270	225	20	5	58,0

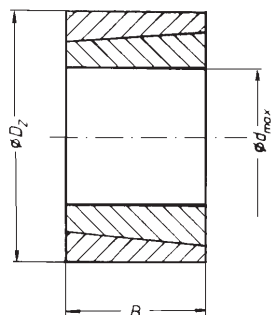
Anschraubnaben • Screw-on-hubs



Mat. EN-GJL-250

Type	Buchse bush	$\varnothing D_A$	$\varnothing D_z$	$\varnothing D_o$	$n \times d$	B	d_n	B_A	Gewicht weight [kg]
AN	1210/1	120	80	100	6 x 8,5	26	75	6,5	1,60
AN	1210/2	180	90	135	6 x 7,5	26	75	9,0	1,80
AN	1610/1	130	90	110	6 x 8,5	26	85	7,5	2,60
AN	1610/2	200	110	150	6 x 7,5	26	90	9,0	2,90
AN	1615	200	110	150	6 x 7,5	38	85	10,0	3,00
AN	2012	270	140	190	6 x 9,5	32	110	11,0	5,20
AN	2517	340	170	240	8 x 11,5	45	125	12,0	9,00
AN	3020/1	430	220	300	8 x 13,5	51	160	16,0	18,00
AN	3020/2	485	250	340	8 x 13,5	51	160	17,0	24,00
AN	3535	500	400			89	180	20,0	34,50

Zwischenhülsen • Adaptors



Mat. EN-GJL-250

Type	Buchse bush	$\varnothing D_z$	B	Nut keyway b x t	Gewicht weight [kg]
ZH	1008	45	22		0,10
ZHN	1008	45	22	5 x 2,5	0,10
ZH	1210	60	25	-	0,20
ZHN	1210	60	25	6 x 3,0	0,20
ZH	1215	60	38	-	0,15
ZHN	1215	60	38	6 x 3,0	0,15
ZH	1610	70	25	-	0,25
ZHN	1610	70	25	10 x 4,0	0,25
ZH	1615	70	38	-	0,40
ZHN	1615	70	38	10 x 4,0	0,40
ZH	2517	105	45	-	1,00
ZHN	2517	105	45	16 x 4,0	1,00
ZH	2525	105	64	-	2,50
ZHN	2525	105	64	16 x 4,0	2,50
ZH	3030	130	76	-	2,80
ZHN	3030	130	76	20 x 5,0	2,80
ZH	3535	160	89	-	3,20
ZHN	3535	160	89	22 x 5,0	3,20
ZH	4040	185	102	-	4,50
ZHN	4040	185	102	25 x 6,5	4,50

Bezeichnung

ZH: Zwischenhülse ohne Nut
ZHN: Zwischenhülse mit Nut

Designation

Adaptor without keyway
Adaptor with keyway

Alle Maße in mm • all dimensions in mm